

Permanent Light 800 / Accessories

Surface housing 1-fold GY



Part No.: 975.815.03

MECHANICAL DATA

| | |
|-----------------------|--------|
| Length | 107 mm |
| Width | 82 mm |
| Height | 55 mm |
| Materials | ABS |
| Housing colour | Grey |
| Protection category | IP65 |
| Weight with packaging | 135 g |
| Product weight | 135 g |

ELECTRICAL DATA

| | |
|------------------------|----|
| Operating voltage type | AC |
|------------------------|----|

APPROVAL DATA

| | |
|-------------------------------|--------------------------------|
| Conforms with RoHS directive | Fulfills substance restriction |
| WEEE | No |
| Conforms with ATEX-directive | No |
| Conforms with CCC | No |
| Conforms with UL | No |
| Conforms with FCC | No |
| Conforms with IC | No |
| EAC certificate available | No |
| Conforms with UKCA (Importer) | No |
| Conforms with CMIM | No |
| Conforms with AS-I | No |
| ICAO Certification | No |
| Conforms with DNV | No |
| Conforms with RoHS CN | No |

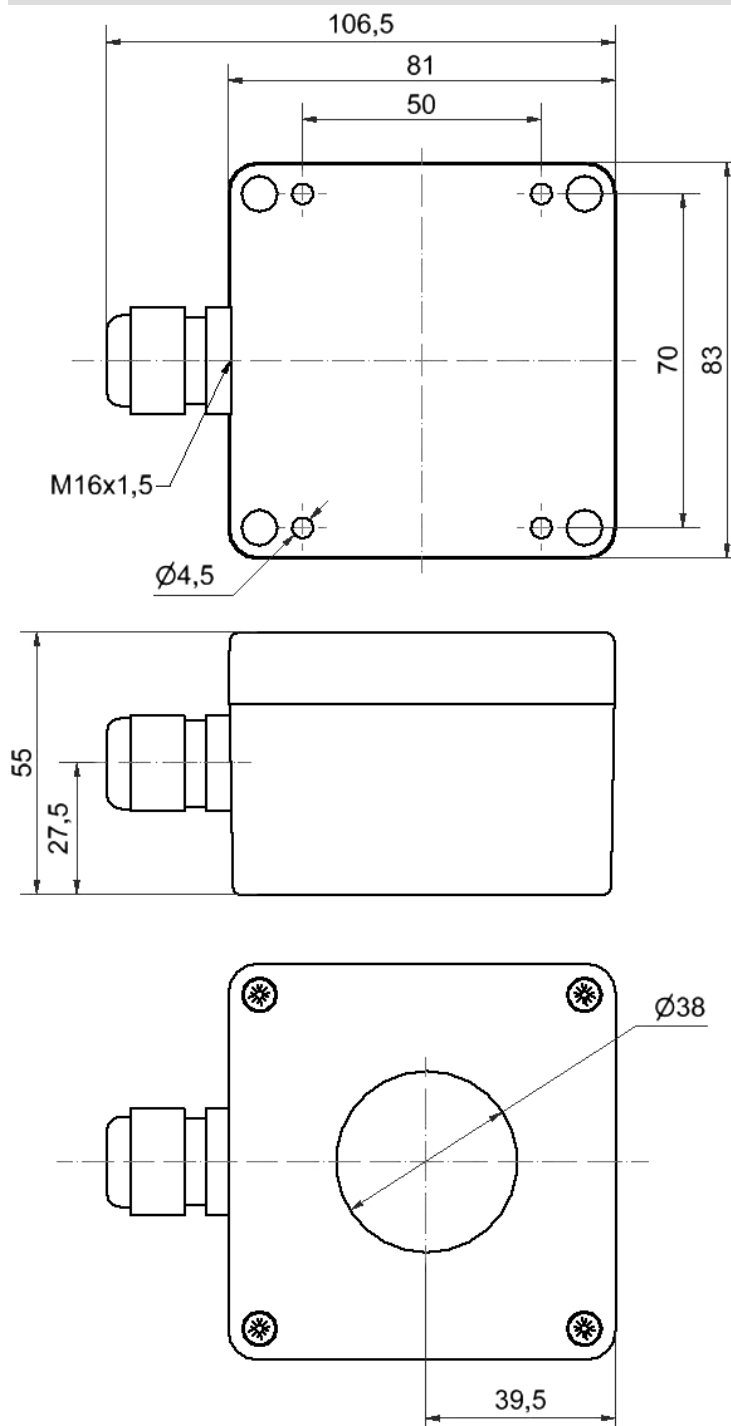


For additional installation and mounting information, refer to the appropriate user guide at www.werma.com. This printed copy is for information only and is subject to alteration.

Permanent Light 800 / Accessories

Surface housing 1-fold GY

DRAWING



For additional installation and mounting information, refer to the appropriate user guide at www.werma.com. This printed copy is for information only and is subject to alteration.