

Traffic Lights / Accessories

## Fixing bow 4 tier w.accessories GY



**Part No.:** 975.890.37

### MECHANICAL DATA

Height	48 mm
Diameter	35 mm
Materials	PC/ABS
Housing colour	Grey
Protection category	IP65
Weight with packaging	216 g
Product weight	216 g

### APPROVAL DATA

Conforms with CE	No
Conforms with RoHS directive	Fulfills substance restriction
WEEE	No
Conforms with ATEX-directive	No
Conforms with CCC	No
Conforms with UL	No
Conforms with FCC	No
Conforms with IC	No
EAC certificate available	No
Conforms with UKCA (Importer)	No
Conforms with AS-I	No
ICAO Certification	No
Conforms with DNV	No
Conforms with RoHS CN	No



For additional installation and mounting information, refer to the appropriate user guide at [www.werma.com](http://www.werma.com). This printed copy is for information only and is subject to alteration.

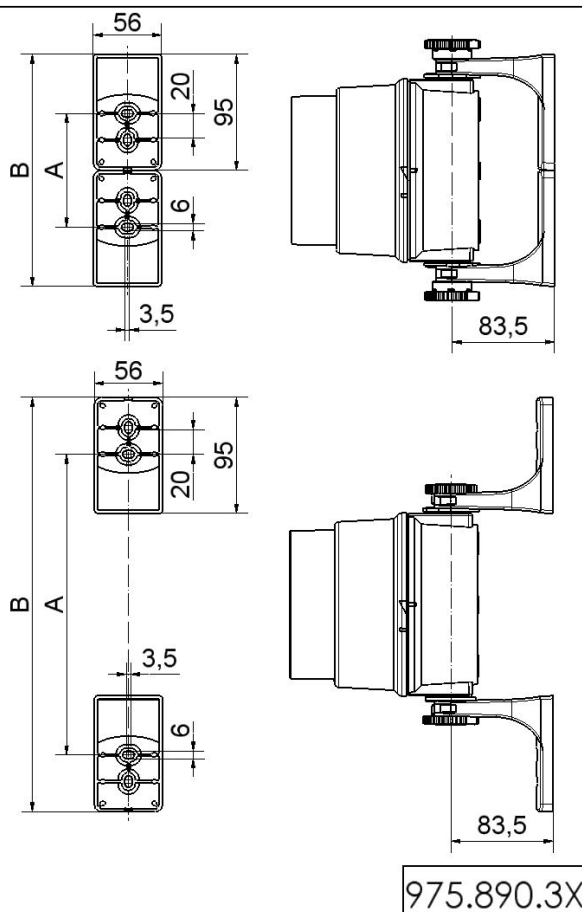
## Traffic Lights / Accessories

### Fixing bow 4 tier w.accessories GY

#### DRAWING

	A	B
975.890.33	93	190
975.890.34	251,2	348,2
975.890.35	409,4	506,4
975.890.37	567,6	664,6

	A	B
975.890.33	245	338
975.890.34	403,2	496,2
975.890.35	561,4	654,4
975.890.37	719,6	812,6



For additional installation and mounting information, refer to the appropriate user guide at [www.werma.com](http://www.werma.com). This printed copy is for information only and is subject to alteration.