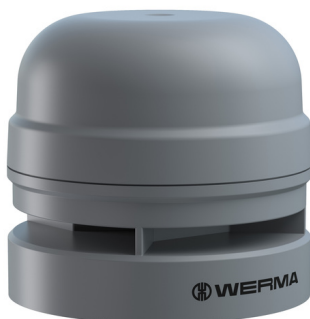


Midi Horns and Sirens / EvoSIGNAL

Midi Sounder 115-230VAC GY



| | |
|-----------|------------|
| Part No.: | 161.700.60 |
| Series: | EvoSIGNAL |



MECHANICAL DATA

| | |
|------------------------------|-----------------------------|
| Height | 78 mm |
| Diameter | 85 mm |
| Materials | PC PC/ABS |
| Housing colour | Grey |
| Protection category | IP66 |
| Connection | Push-in terminal |
| cross-sectional area minimum | 0,25mm ² / 24AWG |
| cross-sectional area maximum | 1,50mm ² / 16AWG |
| Type of fixing | Adapter required |
| Working temperature minimum | -30°C |
| Working temperature maximum | +60°C |
| Weight with packaging | 177 g |
| Product weight | 137 g |

ELECTRICAL DATA

| | |
|-----------------------------|------------------------------|
| Operating voltage | 115-230V |
| Operating voltage type | AC |
| Operating voltage frequency | 50Hz at 230V 60Hz at 115V |
| Operating voltage tolerance | +/- 10% |
| Rated operational voltage | 230 VAC |
| Rated operational current | 105 mA |
| Rated inrush current | 7A |
| Protection class | Protection class 2 |
| Pollution degree | 3 |
| Overvoltage category | II |
| Isolation voltage | Ui = 250V; Uimp = 2.500V |

ACOUSTIC DATA

| | |
|-----------------------------|-----------------|
| Volume (max) at 1m distance | 110,0 dB (A) |
| Acoustic signal image | Multi-tone |
| Number of tones | 10 tone |
| Audio frequency | 3300 Hz |
| Acoustic service life | 5,000 h minimum |

APPROVAL DATA

| | |
|------------------------------|-----|
| Conforms with CE | Yes |
| Conforms with RoHS directive | Yes |
| WEEE | Yes |



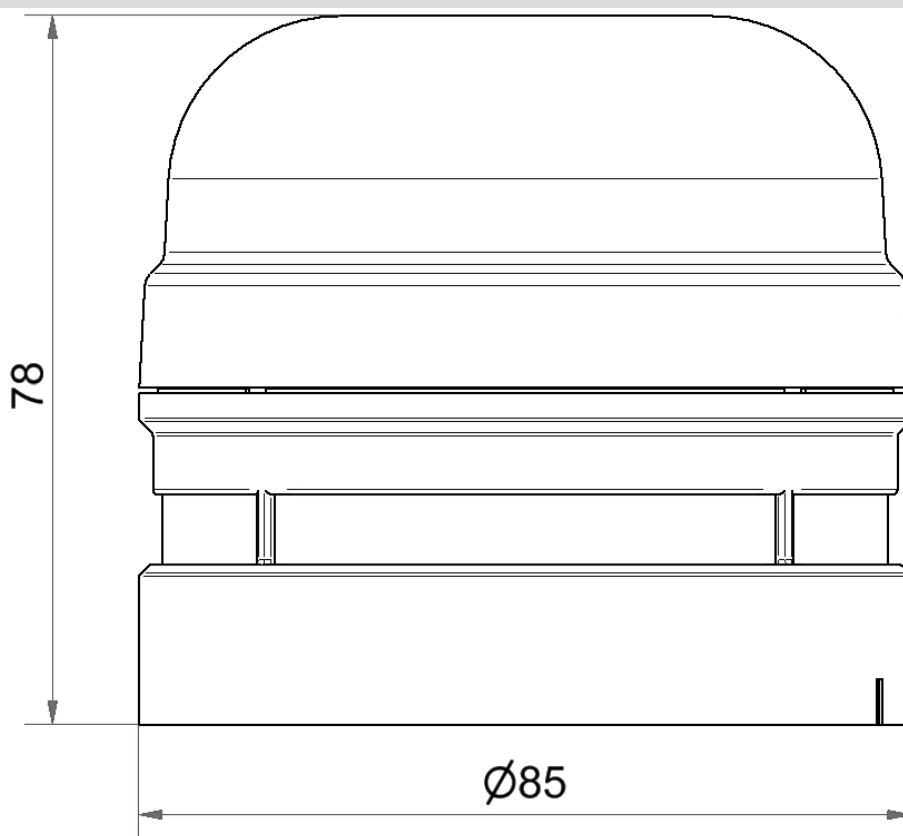
For additional installation and mounting information, refer to the appropriate user guide at www.werma.com. This printed copy is for information only and is subject to alteration.

Midi Horns and Sirens / EvoSIGNAL

Midi Sounder 115-230VAC GY

| | |
|-------------------------------|-----------------------|
| Conforms with ATEX-directive | No |
| Conforms with CCC | Yes |
| Conforms with UL | cULus |
| UL Type Rating | Type 12 |
| Conforms with FCC | No |
| Conforms with IC | No |
| EAC certificate available | No |
| Conforms with UKCA (Importer) | Yes (WERMA (UK) Ltd.) |
| Conforms with AS-I | No |
| ICAO Certification | No |
| Conforms with DNV | No |
| Conforms with RoHS CN | No |
| Conforms with VdS | No |
| MTTF-value [years] | 456 |

DRAWING



For additional installation and mounting information, refer to the appropriate user guide at www.werma.com. This printed copy is for information only and is subject to alteration.